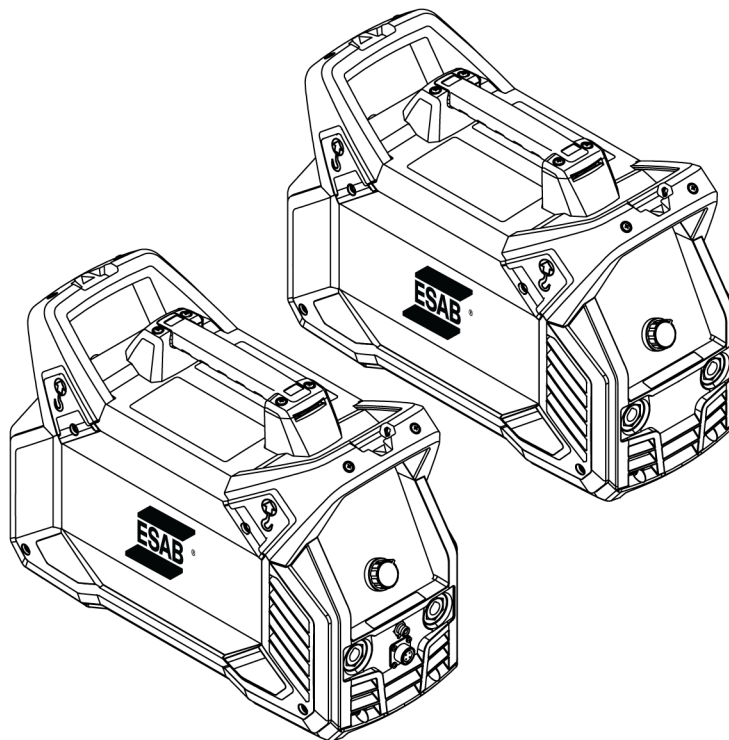




Renegade ES 210i, ET 180iP, ET 210iP, ET 210iP Advanced



Spare parts list

Ordering no.	Denomination	Notes
0447 700 881	ES 210i	Welding power source
0447 700 900	ET 180iP	Welding power source
0447 700 901	ET 210iP	Welding power source
0447 750 880	ET 210iP Advanced	Welding power source
0447 750 881	ET 210iP Advanced CCC	Welding power source
0447 750 882	ET 210iP Advanced AUS	Welding power source
0463 856 *	ES 210i	Instruction manual
0463 862 *	ET 180iP, ET 210iP	Instruction manual
0463 859 *	ET 210iP Advanced	Instruction manual
0463 880 001	ES 210i, ET 180iP, ET 210iP	Service manual

Spare parts may be ordered through your nearest ESAB dealer, see esab.com. When ordering, please state product type, serial number, denominations and ordering numbers according to the spare parts list. This facilitates dispatch and ensures correct delivery.

Maintenance and repair work should be performed by an experienced person, and electrical work only by a trained electrician. Use only recommended spare parts.

For accessories to the product, see the instruction manual.

The three last digits in the document number show the version of the manual. Therefore they are replaced with * here. Make sure to use a information with a serial number or software version that corresponds with the product, see the front page of the manual.

TABLE OF CONTENTS

- 1 SPARE PARTS 4**
 - 1.1 HOUSING MODULE 4**
 - 1.2 IGBT INVERTER BOARD MODULE 6**
 - 1.3 RECTIFIER BOARD MODULE 8**
 - 1.4 SETTING PANEL MODULE 10**
 - 1.5 FRONT AND REAR PANEL CONNECTIONS MODULE 12**
 - 1.6 EMC BOARD MODULE 14**
 - 1.7 FAN MODULE 16**

1 SPARE PARTS

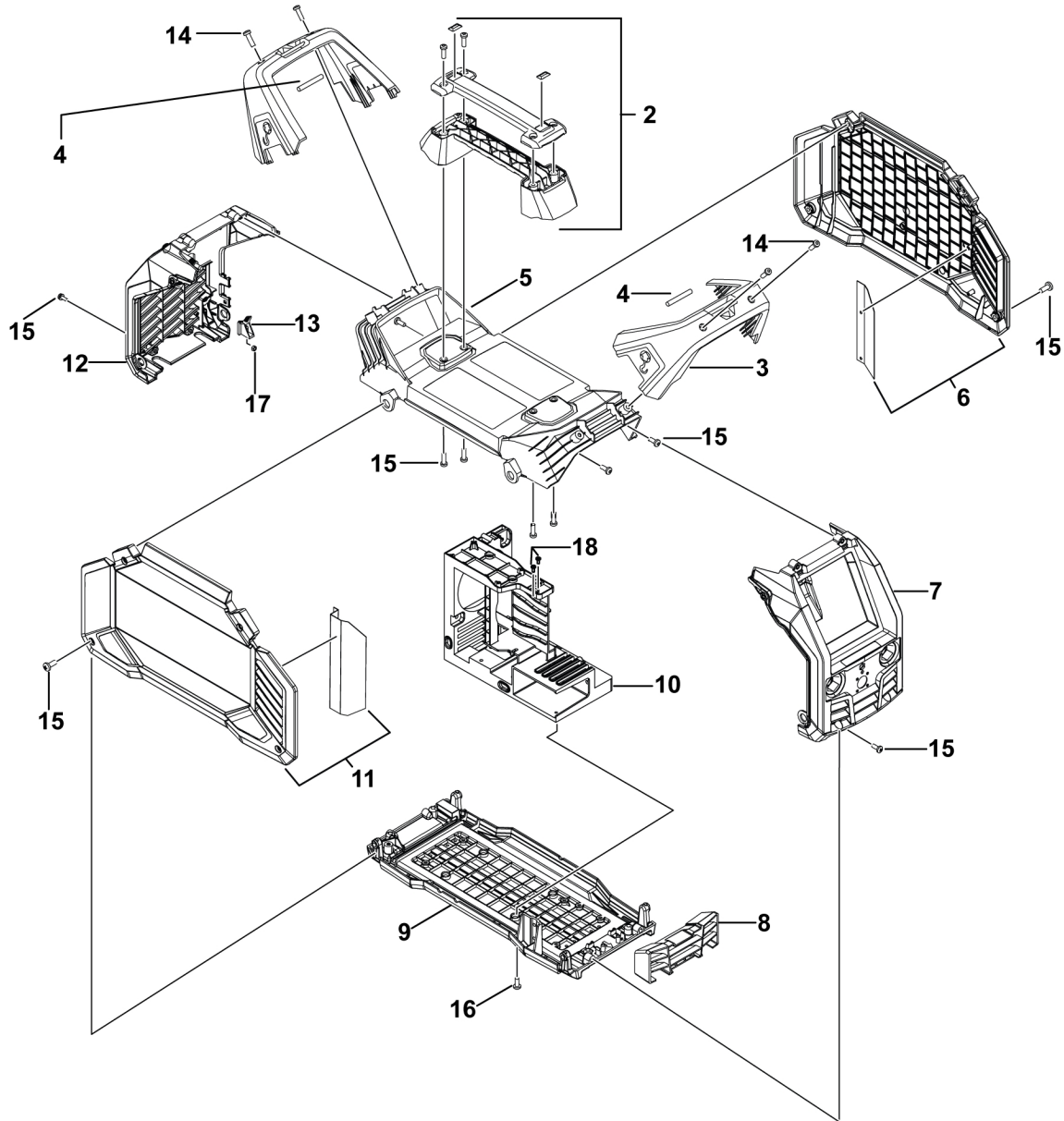
1.1 HOUSING MODULE

C = component designation in the circuit diagram

C = Component designation in the circuit diagram					
Item	Qty	Ordering no.	Denomination	Notes	C
1	1	0445 197 880	Shoulder strap	Not shown in drawing	
2	1	0464 565 880	Top handle	Include Handle top cover, Handle top base and ESAB label	
3	2	0465 952 001	Handle cover		
4	2	0445 129 001	Pin for front and rear handle		
5	1	0465 951 001	Top panel	Including warning decals	
6	1	0700 401 812	Right panel	Includes Water proof plate and Panel decal	
7	1	0700 401 816	Front panel ET 210iP	Includes Name decal and Output connections decals	
		0700 401 817	Front panel ET 180iP		
		0700 401 818	Front panel ES 210i EU		
		0700 401 849	Front panel ET 210iP Advanced EU, CCC		
		0700 401 850	Front panel ET 210iP Advanced AUS		
8	1	0700 401 819	IP shielding fence		
9	1	0700 401 820	Bottom panel		
10	1	0700 401 821	Plastic middle bracket		
11	1	0700 401 822	Left panel	Includes Water proof plate and Panel decal	
12	1	0700 401 828	Rear panel ET 210iP EU	Includes Rear panel decal, Rating plate and Warning decal	
		0700 401 829	Rear panel ET 180iP EU		
		0700 401 830	Rear panel ES 210i EU		
		0700 401 902	Rear panel kit ET 210iP Advanced EU		
		0700 401 903	Rear panel kit ET 210iP Advanced CCC		
		0700 401 904	Rear panel kit ET 210iP Advanced AUS		
13	1	0464 538 001	Stopping block		
14	4		Screw	Remform 5×16 black	
15	12		Screw	M5×12 (black zing plating) salt mist	

1 SPARE PARTS

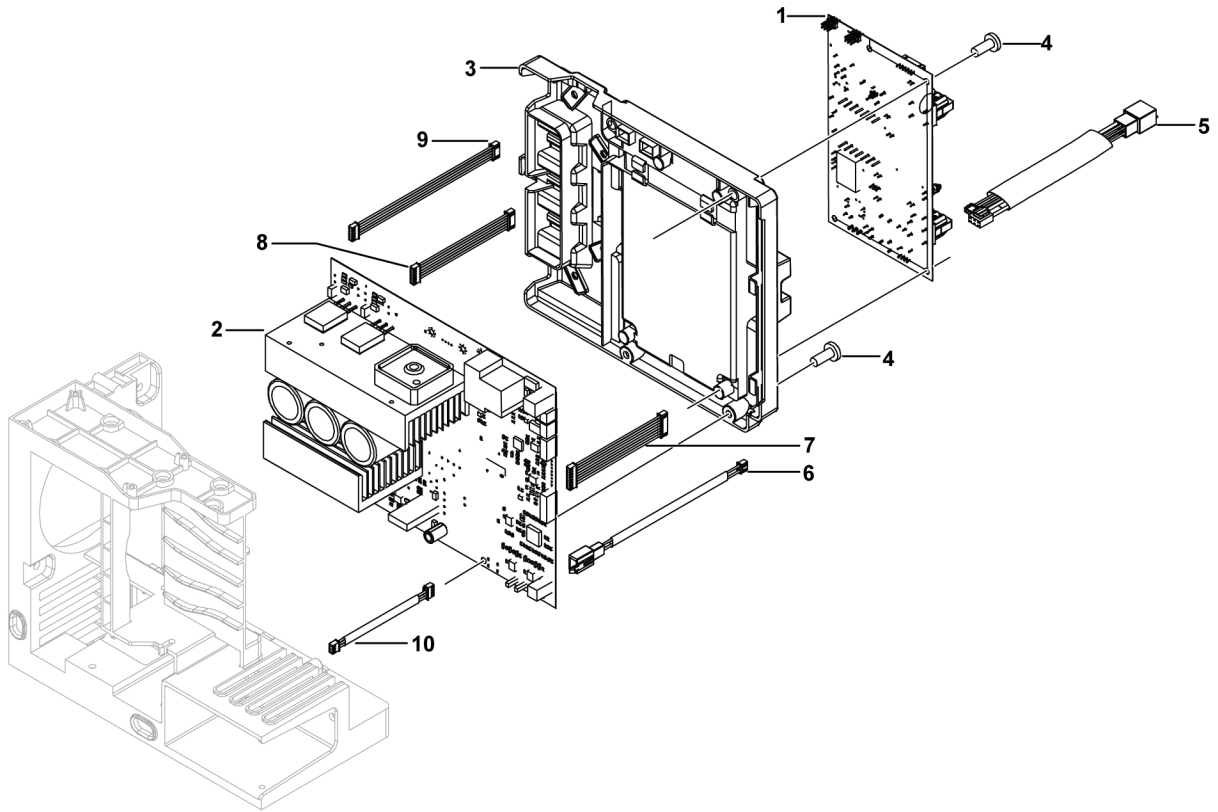
C = Component designation in the circuit diagram					
Item	Qty	Ordering no.	Denomination	Notes	C
16	4		Screw	M4×12 (black zing plating) salt mist	
17	1		Screw	M5 (black zing plating) salt mist	
18	2		Cross recessed pan head screw	M3×20 blue white zinc plating	



1.2 IGBT INVERTER BOARD MODULE

C = component designation in the circuit diagram

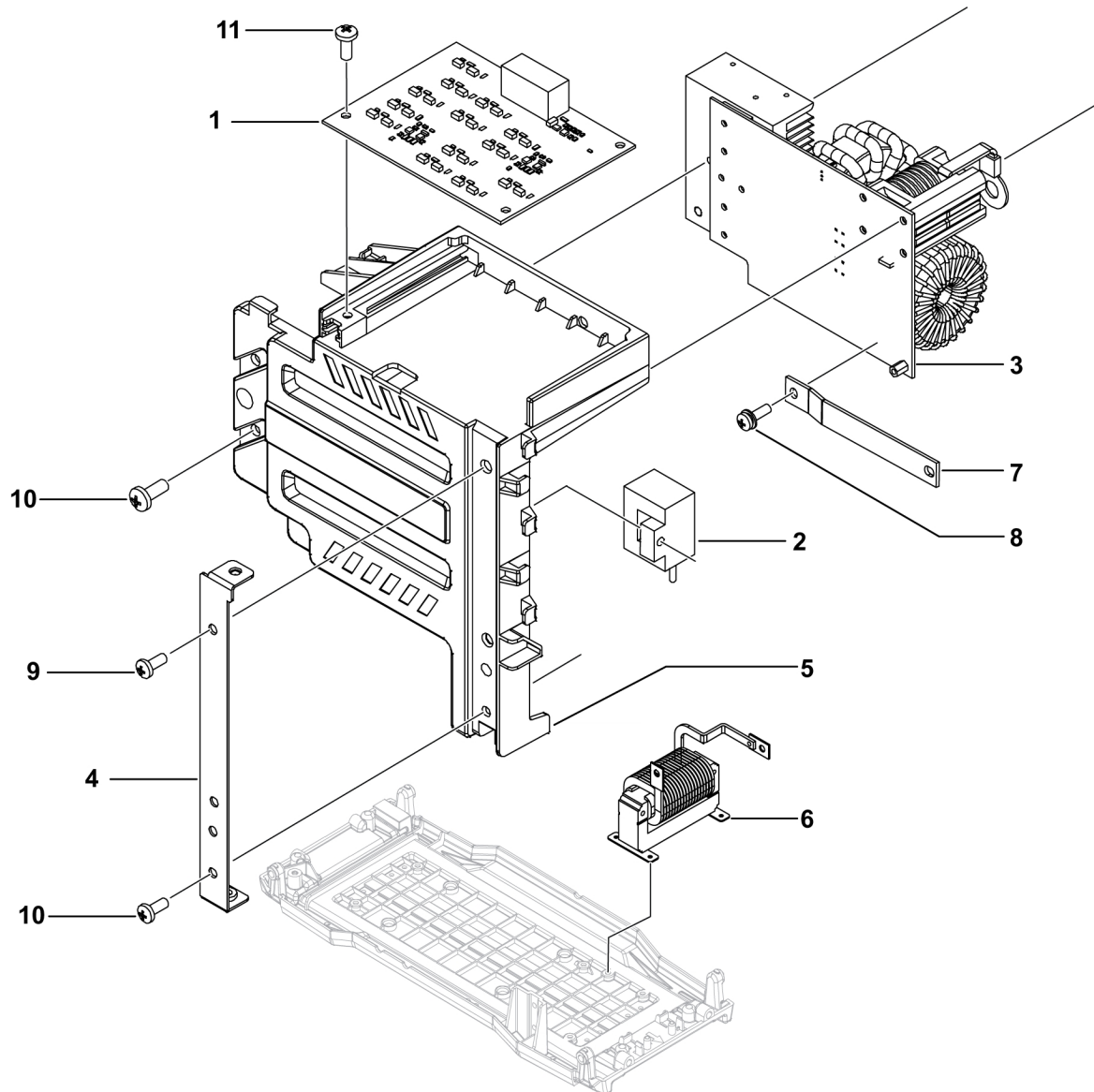
C = Component designation in the circuit diagram					
Item	Qty	Ordering no.	Denomination	Notes	C
1	1	0700 401 808	Liquid cooler power supply PCB	Only for ET 210iP and ET 210iP Advanced	5AP3
2	1	0700 401 809	IGBT inverter board	ET 180iP and ET 210iP	15AP1 / Combi board
		0700 401 846	IGBT inverter board	ET 210iP Advanced	
		0700 401 810	IGBT inverter board	ES 210i	
3	1		Supporting bracket for power supply board	(226.9×42.7×186.4 / black/flame retardant ABS)	
4	8		Hexagon socket head screw with flower head	Qty - 4 Nos (M4×8 black zinc plating) salt mist Qty - 4 Nos For ET 180iP and ES 210i	
5	1	0700 401 838	Harness between Water cooler connector and Water cooler power supply PCB	Connection: CN3, CN4 of Water cooler power supply PCB, ET 210iP and ET 210iP Advanced	
6	1	0700 401 839	Gas solenoid harness	Connection: CN203 of IGBT inverter board, ET 180iP, ET 210iP and ET 210iP Advanced	
7	1	0700 401 840	Ribbon cable	Connection: CN503 of IGBT inverter board and CN1 of High volts arc striking board, ET 180iP, ET 210iP and ET 210iP Advanced	
8	1	0700 401 841	Ribbon cable	Connection: CN2 of Water cooler power supply PCB and CN3 of Front control PCB, ET 210iP and ET 210iP Advanced	
9	1	0700 401 842	Ribbon cable	Connection: CN502 of IGBT inverter board and CN2 of Front control PC, ET 180iP, ES 210i , ET 210iP and ET 210iP Advanced	
10	1	0700 401 843	PFC Board control harness	Connection: CN4 of IGBT Inverter board and CN1 of PFC board, ET 180iP, ES 210i , ET 210iP and ET 210iP Advanced	



1.3 RECTIFIER BOARD MODULE

C = component designation in the circuit diagram

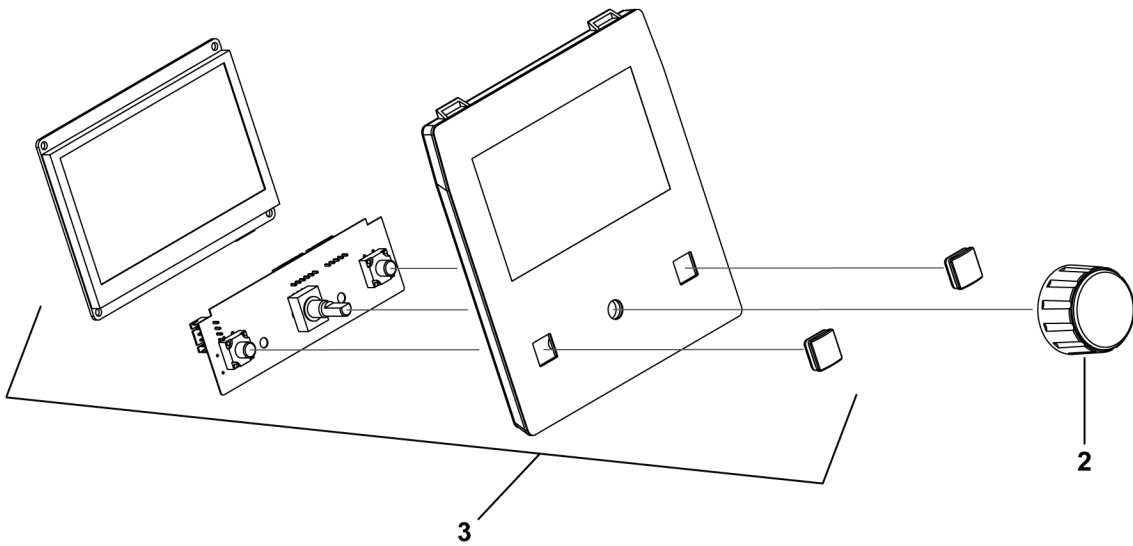
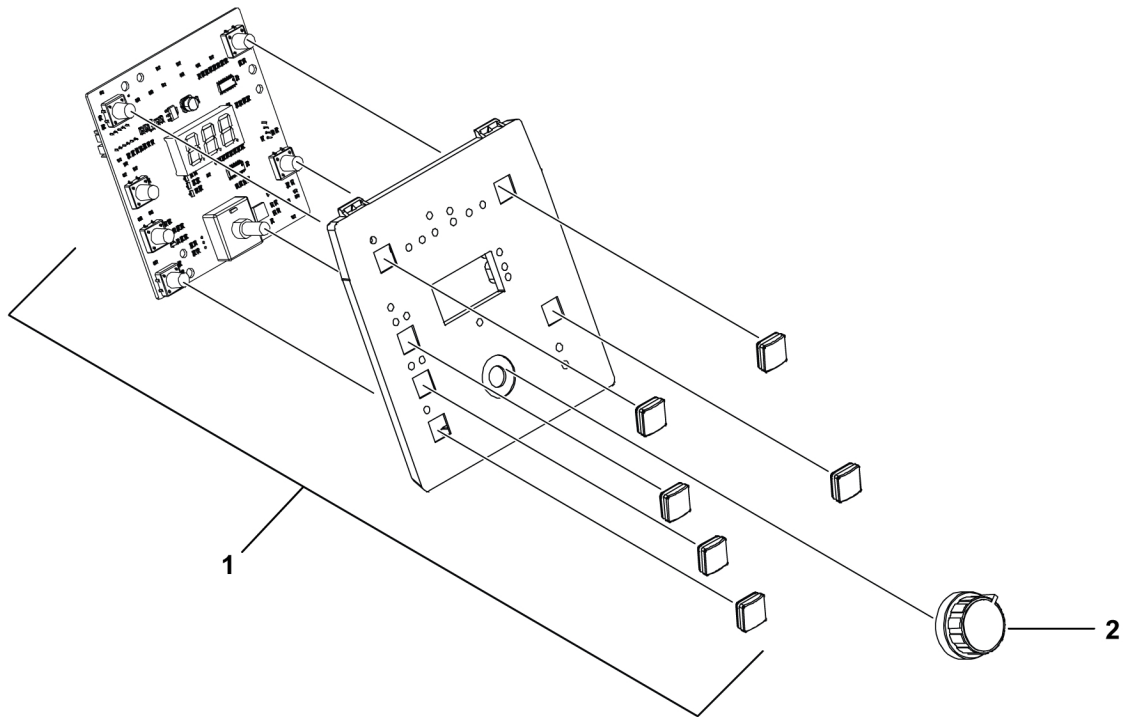
C = Component designation in the circuit diagram					
Item	Qty	Ordering no.	Denomination	Notes	C
1	1	0700 401 811	High volts arc striking board	ET 180iP, ET 210iP	24AP1
2	1	0464 670 006	Hall sensor		
3	1	0700 401 823	Rectifier module with inverter transformer	ET 180iP, ET 210iP, ET 210iP Advanced	15AP2
		0700 401 824	Rectifier module with inverter transformer	ES 210i	
4	1		Grounding line/ROHS 2.0		
5	1		Arc plate fixation	ET 180iP, ET 210iP, ET 210iP Advanced 178.2×89.9×179 (black) flame retardant ABS	
6	1	0700 401 836	Output inductor	ES 210i only	15L1
7	1	0464 752 241	Output the cathode bus-bar/ROHS 2.0	ES 210i only	
8	3		Cross recessed hexagon screw	ROHS 2.0, M6×16	
9	1		Cross recessed pan head screw	GB/T9074.4-1988 ROHS2.0, M4×20 (blue white zinc plating)	
10	3		Cross recessed pan head screw	GB/T9074.4-1988 ROHS2.0/PAHS, M4×20 (blue white zinc plating)	
11	8		Cross recessed pan head screw	M4×8 (blue white zinc plating)	



1.4 SETTING PANEL MODULE

C = component designation in the circuit diagram

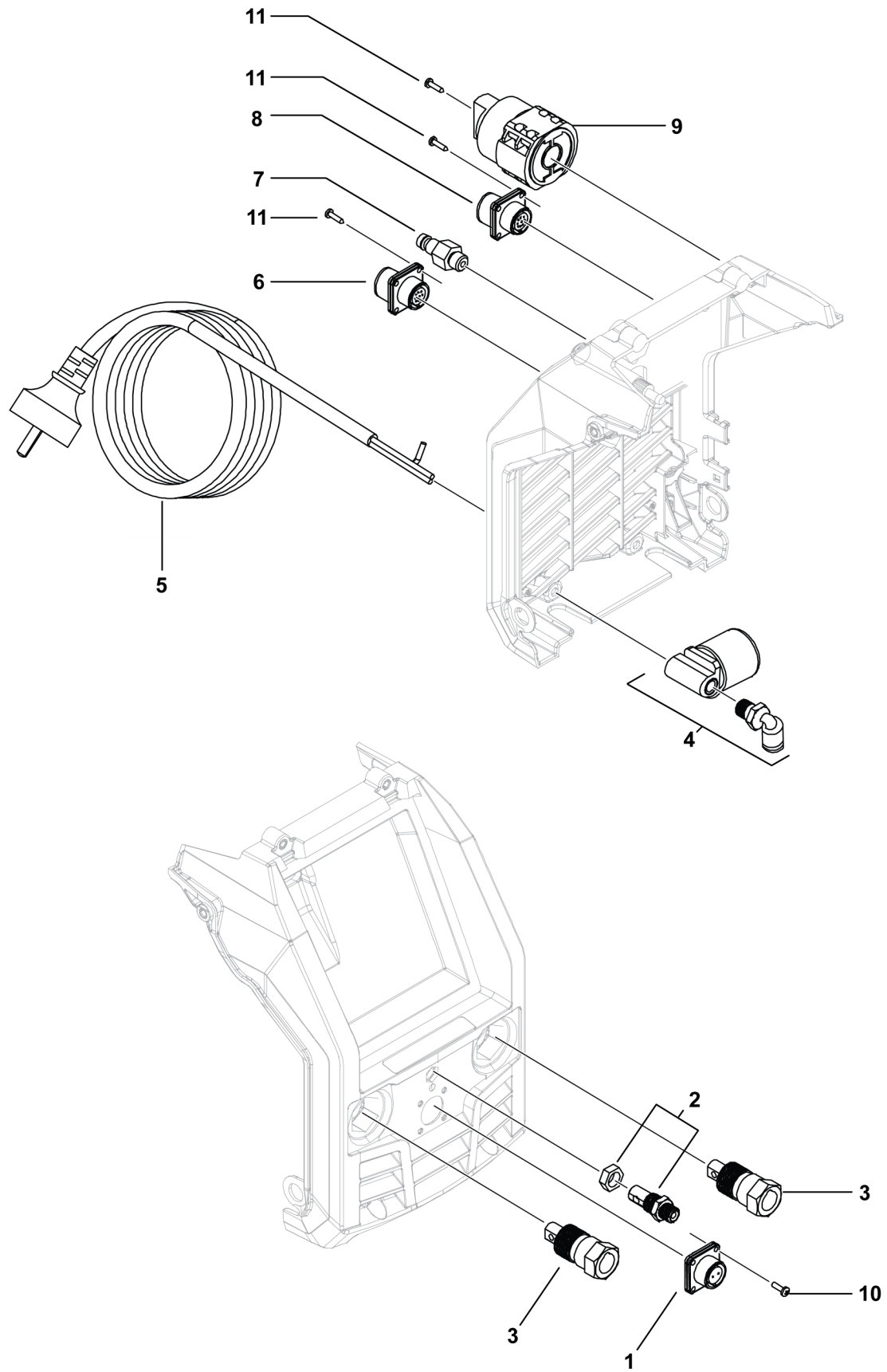
C = Component designation in the circuit diagram					
Item	Qty	Ordering no.	Denomination	Notes	C
1	1	0700 401 813	Front control PCB kit	ET 210iP	1AP1
		0700 401 909	Front control PCB kit	ET 180iP	
		0700 401 814	Front control PCB kit	ES 210i EU	
2	1	0321 475 893	Encoder knob		
3	1	0700 401 801	TFT Display kit	ET 210iP Advanced EU, CCC	1AP1
		0700 401 847	TFT Display kit	ET 210iP Advanced AUS	1AP1



1.5 FRONT AND REAR PANEL CONNECTIONS MODULE

C = component designation in the circuit diagram

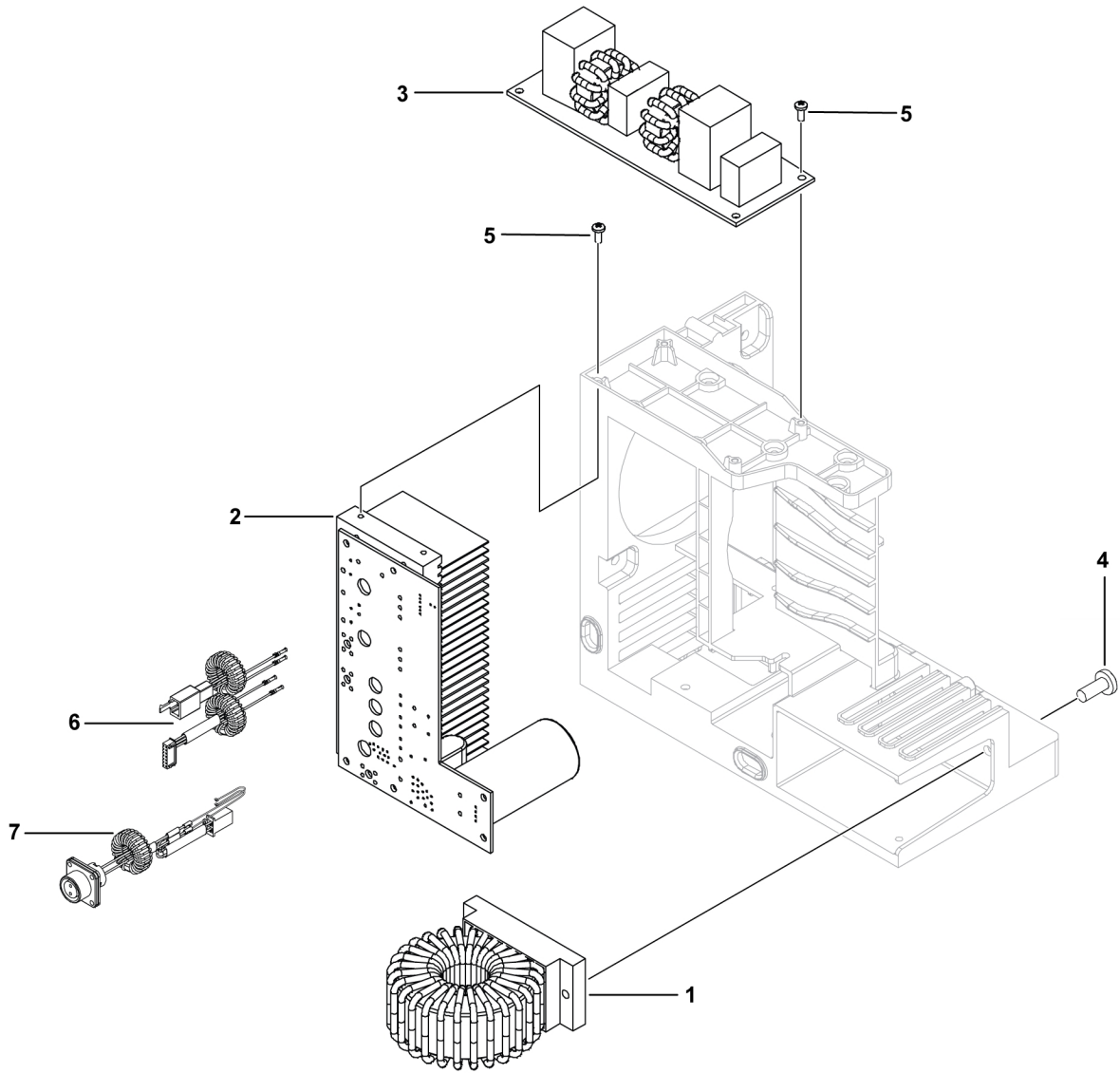
C = Component designation in the circuit diagram					
Item	Qty	Ordering no.	Denomination	Notes	C
1	1	0445 082 880	2 pin connector	Including Harness for ET 180iP, ET 210iP, ET 210iP Advanced	
2	1	0700 401 815	Gas outlet kit	ET 180iP, ET 210iP, ET 210iP Advanced	
3	2	0160 362 025	OKC 50 contact		
4	1	0700 401 827	Gas connector and solenoid valve kit	Including Harness for ET 180iP, ET 210iP, ET 210iP Advanced	
5	1	0464 674 011	Mains cable with schuko plug 16 A	EU	
		0700 401 906	Mains cable without plug	ET 210iP Advanced CCC	
		0700 401 907	Mains cable with 15 A plug	AUS	
6	1	0700 401 831	Water cooler connector with harness		
7	1	0700 401 832	Gas inlet	ET 180iP, ET 210iP, ET 210iP Advanced	
8	1	0700 401 833	8 pin connector EU, CCC	Including harness	
		0700 401 908	8 pin connector AUS		
9	1	0700 401 834	Mains switch		
10	4		Hexagon socket head screw with flower head	M3×8 (black zinc plating) salt mist	
11	10		Hexagon socket head screw with flower head	M3×12 (black zinc plating) salt mist	



1.6 EMC BOARD MODULE

C = component designation in the circuit diagram

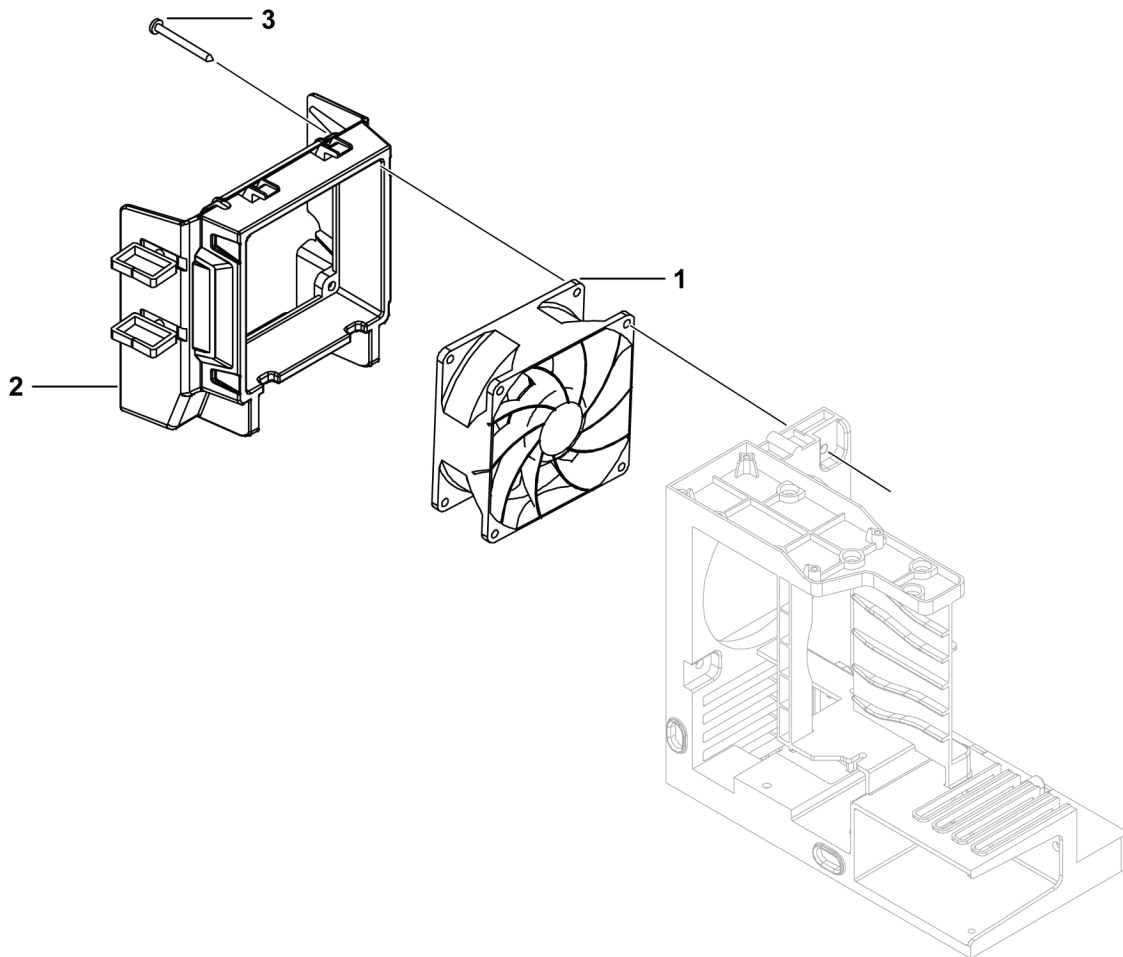
C = Component designation in the circuit diagram					
Item	Qty	Ordering no.	Denomination	Notes	C
1	1	0464 674 008	PFC choke	ET 210iP, ET 180iP, ES 210i	
2	1	0700 401 825	PFC board		
3	1	0700 401 835	EMC board		2AP1
4	2		Cross recessed pan head screw	M4×16 (blue with zinc plating)	
5	8		Cross recessed pan head screw	M3×8 (blue with zinc plating)	
6	1	0700 401 844	2 pin connector harness	Connection: CN3 of High volts arc striking board ET 180iP, ET 210iP and ET 210iP Advanced EU CCC	
7	1	0700 401 845	2 pin connector harness	Connection: Pin 1 and 3 of 2 Pin socket ET 180iP, ET 210iP and ET 210iP Advanced EU CCC	



1.7 FAN MODULE

C = component designation in the circuit diagram

C = Component designation in the circuit diagram					
Item	Qty	Ordering no.	Denomination	Notes	C
1	1	0464 674 003	Fan		
2	1	0700 401 826	Fan bracket		
3	2		Cross trough pan head screw	M4×50 (blue with zinc plating)	





A WORLD OF PRODUCTS AND SOLUTIONS.



For contact information visit [esab.com](https://www.esab.com)

ESAB AB, Lindholmsallén 9, Box 8004, 402 77 Gothenburg, Sweden, Phone +46 (0) 31 50 90 00

manuals.esab.com

